

## AMERICAN STANDARD MALLEABLE IRON PIPE FITTING-CROSS

Type: 180

Doc No: DS-101-180-01-E

### 1.0 PRODUCT OVERVIEW

The cross is one kind of malleable iron pipe fittings with NPT thread, which can connect four pipe joints of the same nominal diameter to make the pipe can be turned 180 degree.



#### Dimensions:

1/8"(DN6)-4"(DN100)

#### Design Standard:

ASME B16.3

#### Connection Standard:

ANSI/ASME B 1.20.1

#### Working Pressure:

300PSI

#### Application:

The malleable iron fitting- cross is mainly applied to medium and low pressure pipeline systems for water supply and drainage, fire protection, air conditioning, etc. with a nominal pressure of 300 PSI. The operating temperature range is -29 °C-120 °C.

#### Pipe Material:

Welded and seamlessly rolled steel pipe:  
ASME B36.10、ASTM A53-A53M

#### Surface Treatment:

Black

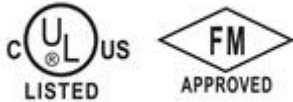
#### Sign Off:

Owner: \_\_\_\_\_ Contractor: \_\_\_\_\_  
Location: \_\_\_\_\_ Date: \_\_\_\_\_

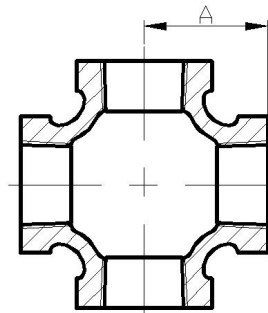
Engineer: \_\_\_\_\_  
Approved & Date: \_\_\_\_\_

- Hot-dip galvanizing
- Electric zinc plating
- Electric zinc plating base on hot dipped galvanizing
- Others would be available upon clients' detailed request

## 2.0 APPROVALS



## 3.0 DIMENSIONS AND PERFORMANCE



<b>Size</b>	<b>Inch</b>	1/8	1/4	3/8	1/2	3/4	1
	<b>mm</b>	6	8	10	15	20	25
<b>Dim (mm)</b>	<b>A</b>	17.5	20.6	24.1	28.5	33.3	38.1
<b>Size</b>	<b>Inch</b>	1 1/4	1 1/2	2	2 1/2	3	3 1/2
	<b>mm</b>	32	40	50	65	80	90
<b>Dim (mm)</b>	<b>A</b>	44.5	49.3	57.2	68.6	78.2	86.9
<b>Size</b>	<b>Inch</b>	4					
	<b>mm</b>	100					
<b>Dim (mm)</b>	<b>A</b>	96.3					

## 4.0 REFERENCE MATERIALS

Approved certification for American Standard Malleable Iron Pipe Fittings

### Sign Off:

Owner: \_\_\_\_\_ Contractor: \_\_\_\_\_  
 Location: \_\_\_\_\_ Date: \_\_\_\_\_

Engineer: \_\_\_\_\_  
 Approved & Date: \_\_\_\_\_